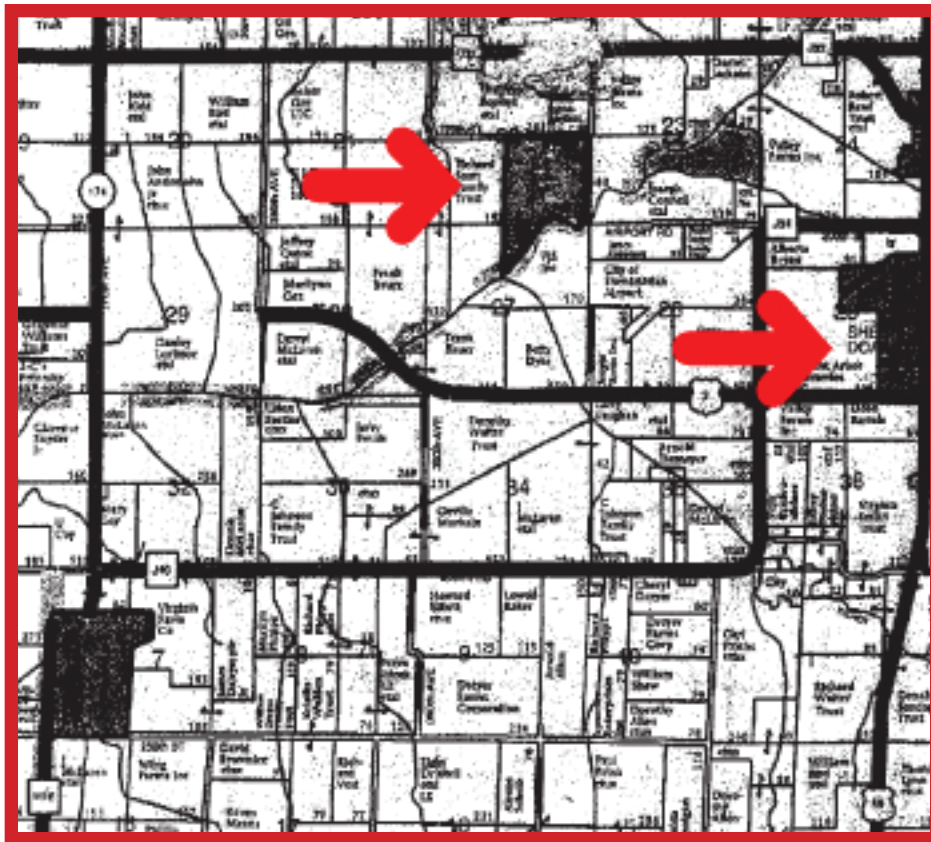


WAYNEHANSEN

REAL ESTATE

**168 ACRES M/L LOCATED IN SECTION 22 & 27,
WALNUT TOWNSHIP,
FREMONT COUNTY, IOWA**

**CSR Ave. 77.7, 140.9 FSA Crop Acres
Corn Base 91.6, Taxes \$3,840/year
FSA Farm #1202, 2010 Possession**



Located near ethanol plant. Just off hard-surface road, two miles west of Shenandoah, IA. Soils mostly Nodaway silt loam, Kennebec silt loam, Colo silty clay loam, and Zook silt loam.

**Fax: 712-764-7654
Phone: 712-764-7653
Cell: 712-249-1785**

**4216 Main St.
Elk Horn, Iowa 51531
www.waynehansen.com**